

WESTERN NEWFOUNDLAND

Sample 11-Night Itinerary | Cross Province–St. John's, Gander, Twillingate, and Western Newfoundland



FERRY TO NEWFOUNDLAND

The Newfoundland adventure begins with your arrival in Argentia, Newfoundland. Travel to your hotel in St. John's 1.5hrs away. But first, stop for a leisurely hike around the charming streets of Brigus & Cupids.



EXPLORE ST. JOHN'S, NORTH AMERICA'S OLDEST CITY

Spend two days exploring St. John's, including visits to: Quidi Vidi, a charming village that embodies the spirit of an old fishing outport; Signal Hill and Cabot Tower, the location of Marconi's first transatlantic wireless message; and, Cape Spear, the most Easterly Point in North America. Enjoy a walking downtown, visiting local shops, and viewing the colourful jellybean row houses lining the streets. On the last night in the capital city, take in the *The Spirit of Newfoundland* dinner show.



GANDER: COME FROM AWAY

Gander Newfoundland, made famous on September 11, 2001 when nearly 40 planes and 6500 people from around the world were diverted there. The hit Broadway show, *Come from Away* is based on this event. With a local guide, visit the airport, the aviation museum and other sites made famous in *Come from Away*.



A DAY IN TWILLINGATE

Twillingate is one of Newfoundland's oldest seaports. Spend the day exploring this charming island community including visits to: the Long Point Lighthouse, Prime Berth Fishing Museum, and the Beothuk Interpretation Centre, which offers insight to this unique, now vanished, culture of the Indigenous peoples of the region. Enjoy another show, *Here to Stay*, inspired by the events of 911 features beautiful ballads, comedic songs, a few Irish favorites and a little step dancing gives you another taste of Newfoundland.



GROS MORNE NATIONAL PARK

Enjoy breakfast at your accommodations and then depart for Gros Morne National Park, a UNESCO World Heritage Site. Tour the state-of-the-art Parks Canada Discovery Centre, including taking the time to watch "Holding Ground", a video that provides an overview of the park's natural history. Lunch at one of Woody Point's or Trout River's seaside cafes. After lunch visit the seaside shops and galleries in Woody Point. Then, "*Walk Upon the Earth's Mantle*." With a Parks Canada Interpreter, stroll the Tablelands; explore the earth's mantle, and hold 400 million year old rocks. Depart for Rocky Harbour for overnight. Enjoy dinner, and then the *Anchor's Aweigh Show*.



BOAT THROUGH GLACIER-CARVED FJORDS

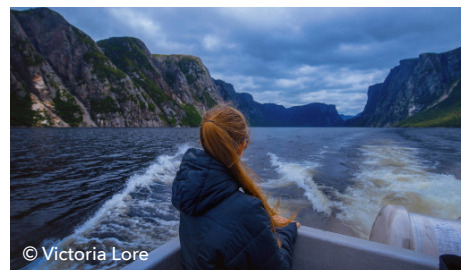
Take a stroll along the trail to Western Brook Pond, over marshland draped in butterworts, great sundew, orchids, dragon's mouth, and the provincial flower, pitcher plants. At the end of your walk, hop aboard a boat tour taking you through the fjord. You'll also get to sail close enough to feel the spray on your face from some of the highest waterfalls in eastern North America. Overnight in Rocky Harbour.



© Barrett & MacKay Photo



© NL Tourism



© Victoria Lore

WESTERN NEWFOUNDLAND

Sample 11-Night Itinerary | Cross Province–St. John's, Gander, Twillingate, and Western Newfoundland



TRAVEL THE VIKING TRAIL

Travel the Viking Trail on the way to Port au Choix. On the way, step inside Broom Point Fishing Premises and imagine the lives of the three Mudge brothers and their families who fished at Broom Point from 1941 to 1975. Parks Canada guides keep the story alive. Explore rocky point, the garden hidden in the tuckamore, and the cemetery in the nearby cove. Next, visit *The Arches Provincial Park*, a unique rock formation eroded by years of sea wave action. Upon arrival in Port aux Choix, explore 6,000 Years of Human History, experience the French Bread Oven at French Rooms Cultural Centre, and visit Point Riche Lighthouse with the possibility to see caribou, seabirds and whales. Overnight in Hawkes Bay.



BEAUTIFUL HUMBER VALLEY

Depart for Deer Lake, visit the Newfoundland Insectarium, one of only two in Canada. Travel through scenic Humber Valley on the way to Corner Brook. On the way, stop in Steady Brook; take the short Steady Brook Falls Trail to see the spectacular falls, and then visit the NL Heritage Tree, a 500 year old carved cedar pole depicting 50 images of art carvings of historic people & scenes, icons, events and cultures of Newfoundland and Labrador from prehistoric times to modern day. Next, the Man in the Mountain—according to local legend the Spanish buried a treasure on Shellbird Island in Humber River. If you look closely, you will see the face of an old man in a rock formation overlooking the island. "The Old Man In The Mountain" is said to be a marker for the treasure, and then Corner Brook Captain James Cook Historic Site for an impressive view of the City of Corner Brook and the spectacular Blomidon Mountains. Overnight in Corner Brook, dinner will be traditional "Jigg's dinner" with local entertainment/



EXPLORE PORT AU PORT

After breakfast, depart for Port au Port. Visit Our Lady of Mercy Heritage Church, the largest wooden structure in Newfoundland and Labrador, as well as the museum and craft shop. Enjoy Tea By The Sea in Mainland. Take a beach walk or go birding with a local guide. After driving the beautiful Port au Port loop. Overnight in Stephenville.



DRIVE THE LIGHTHOUSE LOOP ON THE WAY TO THE FERRY

Depart Stephenville, drive to "The Lighthouse Loop". Perfect for lighthouse lovers. Rose Blanche Lighthouse, Cape Ray Lighthouse & Lightkeepers House, and Cape Anguille Lighthouse are all registered heritage structures, and tell the lively history of protecting fishers and sailors from the dangers of the sea. Along the way, delight in the sights and sounds of the sea at each location too. In Port aux Basques, visit the Railway Heritage Museum, and stroll Scott's Cove/Harbour Boardwalk. After supper, board the ferry for an overnight crossing to Nova Scotia.



go western
newfoundland

Kristy Hoddinott

Director of Travel Trade & Travel Media

Go Western Newfoundland, DMO

kristy@gowesternnewfoundland.com

office: 709.639.9260 | cell: 709.216.0496

gowesternnewfoundland.com/travel-trade

FAM Tour
Planning

Itinerary
Design

Marketing
Support